

TT Combi blue

Multiple winner



Compact fuel tank combined with diesel and adblue.

Transport tank Combi Blue is a compact and safe fuel tank that is combined with an Ad Blue tank of 133 liters and 190 liters respectively in stainless steel. With its well-thought-out design, our diesel tank TT Combi Blue is perfect for the transport and fuel needs of many different workplaces. The fact that it is combined with Ad blue means that you avoid difficult handling with cans and spills of AdBlue, which easily crystallizes. It is safe, easy to use and protected against theft.



MPP's TT Combi blue tank is suitable for:

- Rental
- Civil engineering
- Emergency power supply
- Temporary heating
- Demolition work
- Gala construction

Certifications & approvals

- The product is approved and certified as IBC container (Intermediate Bulk Container) in accordance with the following regulations and recommendations:

UN (UN's recommendations for transport of diesel etc.)

ADR (European regulations for international road transport of diesel etc.)

RID (international regulations for rail transport of diesel etc.)

IMDG (code for international maritime transport of diesel etc.)

PEFC (PEFC is a system for sustainable forestry certification)



About MPP

MPP is a family-owned company in Fjärås in Western Sweden, and has been operating in the Scandinavian market since 2004. We manufacture approved mobile diesel tanks, fuel stations and stationary fuel tanks that are developed for the Nordic climate. We mainly work with companies involved in rental, construction, haulage, forestry and agriculture which, like us, have high standards in terms of quality, safety and the environment.

MPP is a committed partner whose products – from mobile fuel tanks to complete fuel stations – are safe and easy to use. Our brand promise is: **Fuel management in a safe and convenient way**

Standard equipment



Cab design pump-lid for convenient handling.



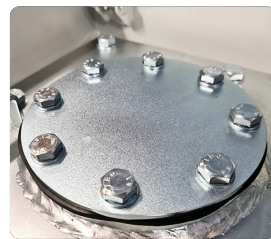
Pump room with extra space for storage of tools and containers



Approved for stacking two tanks full and three tanks empty.



Inward-bent tank sides that protect paint work and company profile.



Easy-access inspection lid for the inner-tank.



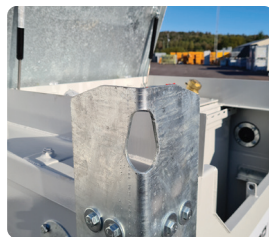
2" valve for simple venting when filling



Hose lead-through (plugged) for continual feed, whilst lid remains locked.



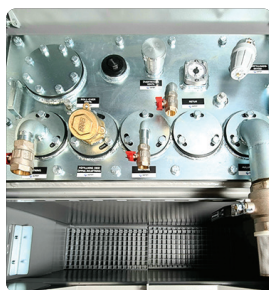
Concealed hinges for pump-lid



Lifting bracket for lifting with crain. Also designed to secure with lifting straps.



4-way fork-lifting pockets



Interchangeable flange connections. L-R from top. Inspection lid, safety plug, pressure vacuum release valve, analogue level meter, fill protection thermistor, 1 pc 1" suction pipe with a valve for pump, 1 pc 1/2" suction pipe with valve, 1 pc 1/2" return pipe with a valve, 1 pc extra socket for suction, 1 pc extra socket for return, analogue level meter, 2" tank filler coupling.



Man-way is placed under the blockade pump-lid for higher theft protection. Valves and connections can be customised to suit your needs.



Light grey RAL 7035



Melon yellow RAL 1028



110% Environmental bund

Tank specifications

Art. no:	101214	101151	101144
Description:	Transport tank combi blue 800 liter	Transport tank combi blue 2000 liter	Transport tank combi blue 3000 liter
Model description:	TTCB080	TTCB200	TTCB300
Volume 95% (l):	789+133	1770+133	2578+190
Length (mm):	1190	2325	2325
Width (mm):	1210	1210	1625
Height (mm):	1315	1315	1315
Net weight (kg):	707	1090	1323
Gross weight (kg):	1659	3034	4152